

500 YEARS

OF RARE TREASURES

*Patek Philippe
Geneve*

M.S.  Rau
FINE ART • ANTIQUES • JEWELS

i



Émile Gallé Cameo Glass Lamp

Etched with the silhouette of a wooded landscape, this lamp not only demonstrates Gallé's mastery in glass, but also his love of nature and Art Nouveau design. Circa 1905. #31-2944. \$44,500

15½" w x 6¾" d x 19" h



500 YEARS

OF RARE TREASURES

M.S. Rau is a world-renowned purveyor of fine art, jewelry and antiques that are beyond exceptional. This catalog, with its curated selection of treasures from the 16th through the 21st centuries, presents some of the most important objects in our world-class collection.

One-of-a-kind masterpieces such as a 17th-century double portrait by Gaspar Antoine de Bois-Clair and a 20th-century American Impressionist portrait by Mary Cassatt are featured alongside highly intricate 19th-century automaton clocks and 18th-century furniture. M.S. Rau is proud to offer this museum-worthy collection. If something interests you, please contact your personal Sales Consultant, and we will handle the rest.



To view videos of some of our masterpieces, scan the unique QR codes found throughout this catalog using your smartphone camera.

To view more treasures, visit us online at msrau.com or follow us on social media.





Raymond Yard Fancy Intense Yellow Diamond Brooch

Intense yellow diamonds: 2.37 carats
White diamonds: 8.60 carats | Platinum

Magnificent in both design and materials, this Art Deco brooch showcases a coveted pear-shaped fancy intense yellow diamond. #31-2764. \$168,500

Fancy Red Diamond Ring

Red diamond: 0.36 carat
Pink, blue and white diamonds: 1.48 carats
Platinum and 18K gold

Celebrated as the most valuable of all gemstones as well as one of the rarest substances in the entire world, the natural fancy red diamond in this ring is a remarkable treasure. #31-2850. \$495,000





Art Deco Burma Ruby Ring

Burma ruby: 1.52 carats | Diamond: 0.80 carat
Diamond accents | Platinum

Two pear-shaped gemstones, one a rare Burma ruby and the other a white diamond, sit back to back in their highly unique, custom setting. Circa 1930. #31-2886. \$38,850



Demantoid Garnet Bypass Ring

Demantoid garnets: 5.35 carats
Diamond accents | Platinum

This ring showcases two exceptionally rare demantoid garnets, one of the most desirable gemstones in the world and the only gem with a higher light dispersion than a diamond. The unique pair are certified as Russian and untreated. #31-2573. \$228,500



South Sea Pearl Necklace

Pearls: 17mm to 19.4mm

Diamonds: 2.68 carats | 18K white gold

Monumental size and exceptional luster set the 23 South Sea pearls in this necklace apart. While most South Sea pearls measure between 10mm and 15mm, these treasures measure an astounding 17mm to 19.4mm.

#31-2368. \$248,500



Mandolin Lapel Watch

Tourmaline and diamond accents | 18K gold
Vibrantly colored enamel adorns this ladies' lapel watch, which features a timepiece by Longines. 2" length. #31-2776. \$42,500





Patek Philippe Squelette Pocket Watch

18K gold

This skeletonized pocket watch allows an unobstructed view into the timepiece's world-class inner workings. Every millimeter of the ultra-thin case and the 18-jewel movement, both crafted of gold, is elaborately hand engraved. Combining precision timekeeping and delicate artistry, this pocket watch displays the unrivaled genius of Patek creations. 47mm dia. #31-2888. \$98,500



GEORGIAN
1714-1836

Created during the consecutive reigns of English kings George I, II, III and IV, Georgian silver reflects the abundant ornamentation of the Baroque, Rococo, Neoclassical and Regency periods.



George II Silver Candlesticks

Crafted by Alexander Johnston, these candlesticks are covered in exuberant Rococo decoration, from shells and palms to acanthus and rosettes. Hallmarked London, 1751. #29-2695. \$78,500

4" dia. x 10³/₄"h

George III Silver Epergne

London silversmiths John Lawford and William Vincent crafted this highly elaborate epergne that is beautifully embellished with fruits, vines and two cherubs on the basket. Hallmarked London, 1766. #28-2753. \$58,500

17½" w x 18½" d x 13¾" h



English Silverplate Fountain

This impressive floor fountain was specially designed to be displayed inside the home. Standing nearly 5 feet tall, it was intended to be used during special events to serve wine or champagne for a truly spectacular presentation.

Circa 1900-10. #31-1488. \$68,500

23" dia. x 57"h







Tiffany & Co. Winthrop Flatware Service

This silver flatware service for 12 displays the *Winthrop* pattern, which remains one of the company's most beloved motifs. Incorporating garlands and baskets of fruit, it epitomizes the elegance of dining during the Edwardian period. Fully marked. Circa 1920. #30-8664. \$48,500

Case: 17³/₄"w x 12⁵/₈"d x 9¹/₄"h



This item is not online.
Call for details



CHRISTOPH SCHWARZ

c.1545-1592 | German

The Arrest of Two Saints

Circa 1580 | Oil on copper

Christoph Schwarz is revered as one of the most important proponents of Venetian-style painting in southern Germany, and this masterfully executed scene represents the artist at his best. As is typical of Venetian painting of the time, the work is enhanced by its chromatic and brilliant coloring, with a palette of cerulean, gold and deep crimson. The painting is enlivened by the use of copper as a canvas, a rare and valuable medium for the period, giving the work a luminous quality. The entire scene is suffused with bright light, bringing to life the drama that unfolds in its arresting narrative. #31-1152. \$98,500

Copper: 18 $\frac{1}{2}$ "h x 18 $\frac{5}{8}$ "w | Frame: 23 $\frac{1}{2}$ "h x 24"w









GASPAR ANTOINE DE BOIS-CLAIR

c.1654–1704 | French

*Double Portrait of King Frederik IV and Queen Louise of
Mecklenburg-Güstrow of Denmark*

Circa 1699 | Oil on wood strips laid on panel

When viewed straight on, this “turning picture” by Gaspar Antoine de Bois-Clair appears to be a disorganized collection of painted facial features and wooden slats. However, when viewed at an angle from either side, two separate images are revealed — portraits of Frederik IV and Louise of Mecklenburg-Güstrow, the King and Queen of Denmark. A wonder of both portraiture and trompe l’oeil, this work demonstrates the artist’s skill in rendering intriguing visual effects.

The exceptionally rare work is one of only three surviving lenticular double portraits by Bois-Clair. The others can be found in Rosenborg Castle in Copenhagen and Hessisches Landesmuseum in Kassel. #31-2777. \$148,500

Panel: 15⁵/₈”h x 12³/₄”w | Frame: 19¹/₄”h x 16³/₈”w





JOHN ATKINSON GRIMSHAW

1836-1893 | British

Woodland near Leeds

Dated 1869 | Oil on canvas

Signed and dated (lower left)

This atmospheric woodland scene was composed by John Atkinson Grimshaw, one of the most influential painters of the Victorian period. The oil is both brilliantly hued and exquisitely detailed, showcasing Grimshaw's mastery for capturing the light and atmosphere of the British landscape. While the majority of the artist's works depict moon-washed cities and the fishing villages of Britain, this example is a rare daytime scene with a jewel-like palette of blues, turquoises, greens and yellows. The tones are characteristic of Grimshaw's output, while its remarkably rich palette and high level of detail make it an outstanding example of Victorian painting. #31-2620. \$148,500

Canvas: 36"h x 30"w | Frame: 41½"h x 35¼"w

VICTORIAN ART
1837-1901

Art created during the reign of Queen Victoria saw a marked shift from the grandeur of the previous era to more poetic artistic expressions, reflecting the romanticism of the age.



GEORGE HARCOURT

1868-1947 | Scottish

Muriel, Cynthia and George

Dated 1900-1 | Oil on canvas

Signed and dated (lower right)

Capturing childhood innocence at its most pristine is this life-size painting by portraitist George Harcourt. With his soft, fluid brushwork and vibrant palette, the artist presents these siblings with the utmost sincerity.

The painting depicts Muriel, Cynthia and George Perkins – their family being prominent members of British society. Harcourt utilizes bright colors and a keen eye for detail to compose this nostalgic and touching scene. The oldest daughter guides her brother with one hand on his shoulder, while the second daughter holds his hand. This physical connection reflects the emotional bond between the three, adding a deeper emotional element to this sentimental work of art. #30-8916. \$124,500

Canvas: 72”h x 92”w | Frame: 83”h x 103”w







L. Perrault
1876



LÉON-JEAN-BASILE PERRAULT

1832-1908 | French

Young Girl with a Basket of Flowers

Dated 1880 | Oil on canvas
Signed and dated (lower left)

This oil is the work of the Academic painter Léon-Jean-Basile Perrault. It is a celebration of childhood innocence, appealing both in its subject matter and its masterful execution. Perrault specialized in portraying children in realistically composed scenes of innocence and domesticity, and this portrait of a girl with her basket of colorful wildflowers is typical of the Academic master. The composition in its entirety boasts exceptionally luminous coloration, a distinctive hallmark of Perrault's work and of the French Academy. #30-9175. \$148,500

Canvas: 42⁷/₈"h x 30⁷/₈"w | Frame: 49³/₄"h x 38¹/₈"w

ACADEMIC ART 1560-1900

Academic art refers to paintings that were produced under the influence of the European academies, particularly the Royal Academy and French Salon, which heralded the movements of Neoclassicism and Romanticism.

This item is not online.
Call for details



WILLIAM GLACKENS

1870-1938 | American

Lake Bathers

Circa 1920 | Oil on canvas

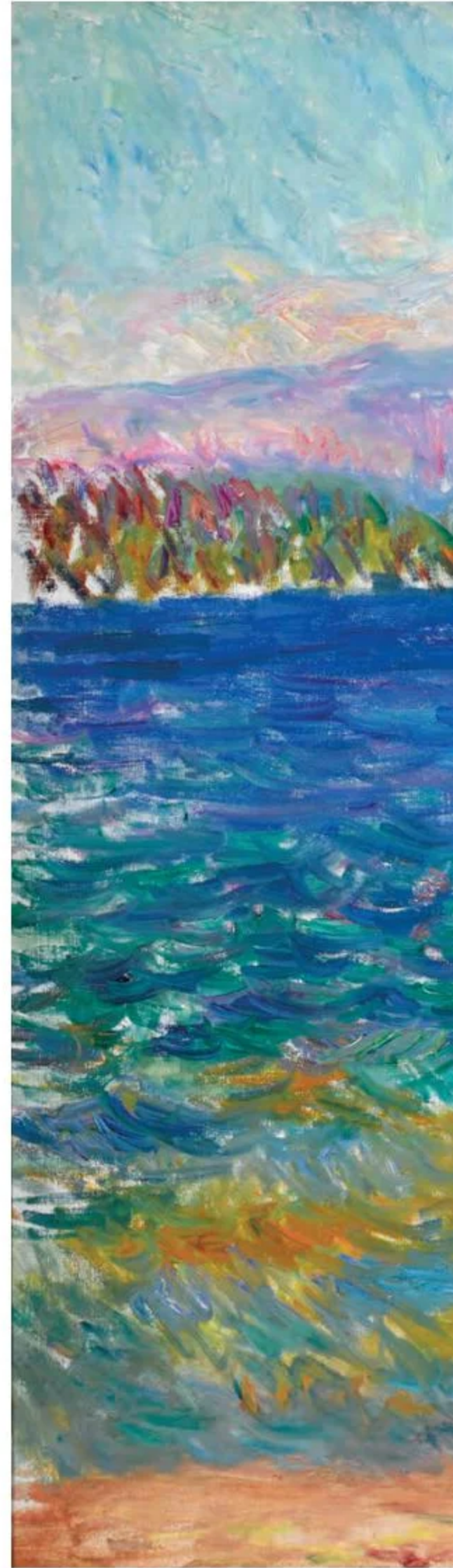
This leisure scene by Impressionist William Glackens captures a group of vacationers gathered along a river's shore; the teenage boy is possibly his son, Ira. Based on the rocky beach and the mountains that line the horizon, the locale is almost certainly Conway, a small town in New Hampshire where the artist summured with his family.

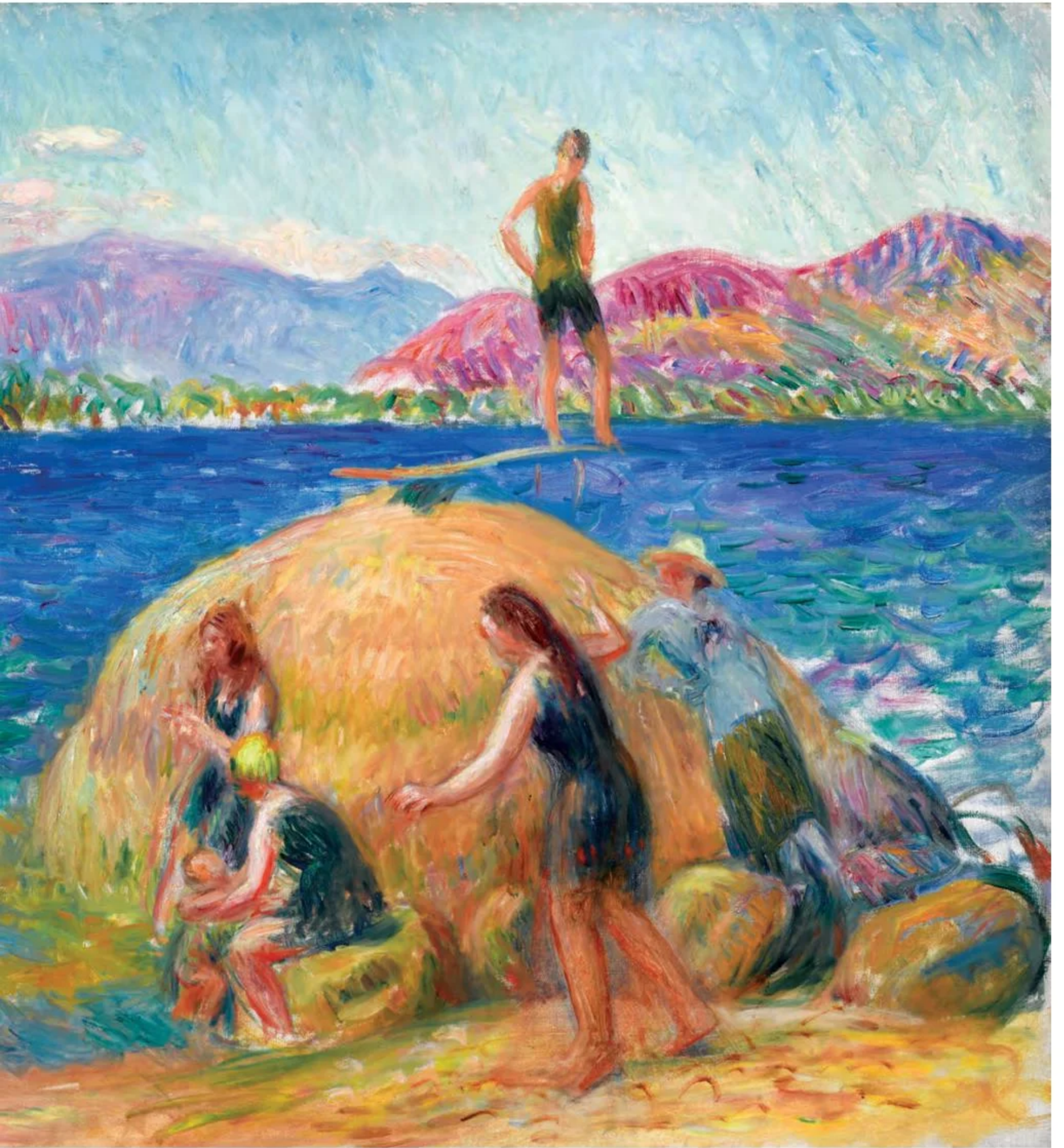
Glackens served as the art advisor to Alfred C. Barnes, founder of the world-renowned Barnes Foundation, which includes the most extensive collection of Renoir paintings ever assembled. Renoir's influence is apparent in the painting's soft brushwork, as well as its rich orchestration of contrasting and complementary hues. #31-2852. \$595,000

Canvas: 25"h x 30"w | Frame: 36¹/₄"h x 41¹/₄"w

AMERICAN
IMPRESSIONISM
1890-1910

Like their French counterparts, American Impressionists depicted scenes of everyday life with natural light and rapid brushwork. However, they were also concerned with portraying places that offered a sense of national identity, ushering in the first popular, modern art movement in America.







MARY CASSATT

1844–1926 | American

Woman Reading a Book

Painted in 1911 | Oil on canvas

Signed (lower right)

This important oil is a significant example of Mary Cassatt's thoroughly modern approach to traditional portraiture. As one of art history's most important female artists, Cassatt forged a career from her intimate portrayals of the world around her, particularly women and maternal figures in domestic settings. The present portrait illustrates her artistic devotion to the theme of the modern woman, executed in the Impressionist style that she helped to shape. Here, her characteristically long, loose brushstrokes and mastery of color are on full display, as she beautifully captures a moment of serene introspection.

The model for the work is Renée Chauvet, a woman from a nearby village who was a favorite of Cassatt. She can be seen in other important works from the period, most significantly *Young Mother and Two Children* from 1908 (White House Collection, Washington, D.C.). #31-2878. \$1,450,000

Canvas: 26¹/₄"h x 22"w | Frame: 36³/₈"h x 32¹/₈"w





FREDERICK CARL FRIESEKE

1874-1939 | American

Lady at the Mirror

Circa 1922 | Oil on canvas

Signed (lower right)

Part of the second generation of American painters to study in Giverny, Frederick Carl Frieseke is among the most important American Impressionists of his age. While many of his contemporaries focused on the landscape, Frieseke gained his inspiration from the figural, particularly the theme of femininity. His works capture female figures engaging in traditional roles — strolling in the garden or posed in a domestic interior. *Lady at the Mirror* exemplifies the latter, and it is executed with the artist's deft handling of color.

The work demonstrates the artist's eye for composition; the mirror (with its reflection) is the perfect framing device, offering a view of the front and back of the artist's model as she removes her robe. The soft familiarity of the work is enhanced by the painter's characteristic limitation of palette, which has been pared down to a series of pale greens, blues and violets. All of Frieseke's distinctive artistic devices come together in *Lady at the Mirror*, resulting in a highly successful and balanced composition. #31-2880. \$885,000

Canvas: 32³/₄"h x 32¹/₄"w | Frame: 43"h x 42¹/₂"w





JULES PASCIN

1885-1930 | Bulgarian-French

Femme aux souliers noir

Circa 1923 | Oil on canvas

Signed (lower left)

This intimate portrait represents the best of Jules Pascin's output, which was dominated by sensitive portrayals of women in casual poses. Influenced by the French Impressionists, Pascin developed a highly gestural style that is uniquely his own. *Femme aux souliers noir* displays the qualities that made his work so groundbreaking during his lifetime.

This painting hails from Pascin's *nacrée*, or "pearly," period, named for the pearly luster that characterized his style of the time. His technique utilized transparent layers of paint, lending a ghostly, immaterial quality to his figures. This portrait perfectly embodies the atmospheric qualities of his *nacrée* style, displaying the earthy softness and intimate charm that made the artist so successful. #31-1161. \$98,500

Canvas: 24"h x 18"w | Frame: 33¹/₄"h x 27"w



L. Stein



LE PHO

1907-2001 | Vietnamese

Fleurs

20th century | Oil on canvas

Signed (lower right) and titled (en verso)

This serene, airy floral still life was composed by the great Le Pho. Alongside Vu Cao Dam, Le Pho was one of the most important Vietnamese painters of the modern age, and his paintings offer a unique mix of Eastern and Western styles that give them a wide international appeal.

Le Pho is celebrated for his floral still lifes such as this, which is rendered in the cool, tranquil palette that typifies his oeuvre. Though his subjects are rooted in the Oriental tradition, his style reveals a Western influence, the result of his years spent studying in Paris. In particular, his impressionist brushwork and palette recall the works of the great Henri Matisse and Pierre Bonnard, whose styles he emulated throughout his career. #31-1783. \$98,500

Canvas: 23³/₄"h x 29"w | Frame: 32"h x 37¹/₈"w







ALFREDO RAMOS MARTÍNEZ

1871-1946 | Mexican

In the Ranch, Mexico

Circa 1935 | Oil on board

Signed (lower right) and titled (en verso)

Alongside Frida Kahlo and Diego Rivera stands the great Alfredo Ramos Martínez as one of the most important Mexican artists of his age. Over a long career, Ramos Martínez produced works in a modern idiom with a remarkable beauty in their simplicity of form and structure. *In the Ranch, Mexico* offers clear testimony to the artist's ability to capture the spirit of Mexican life with his distinctive aesthetic sensibility – highly stylized compositions and a palette of rich and earthy color.

The work was painted at the height of the artist's career while he was living in California. Though his compositions capture the spirit of Mexican life, his success in the United States proves that his legacy transcended cultural borders, and today he is also considered a major figure of California Modernism as well as Mexican art. #30-7864. \$485,000

Board: 23⁷/₈"h x 27³/₈"w | Frame: 30¹³/₁₆"h x 34¹/₈"w

MEXICAN
MODERNISM
1925-1945

Flourishing after the Mexican Revolution (1910–1920), Mexican Modernism emerged as a national aesthetic expression of post-revolutionary ideals that called for unification and a cohesive Mexican cultural identity.







JEAN-PIERRE CASSIGNEUL

b.1935 | French

Fin de journée

Oil on canvas

Signed (lower left) and titled (en verso)

A striking woman in white sits waterside in this oil by Jean-Pierre Cassigneul. A classic example of his aesthetic, *Fin de journée* brings together all of the motifs for which he is renowned: a fashionable lady, a sailboat and the sea. Together with a vibrant palette, they form the distinctive style of this contemporary artist.

Cassigneul stands among the most popular living French painters of the age, and his canvases reflect his own unique experiences of his time and place. Dominated by sleepy-eyed beauties, his compositions display a unique fusion of French haute couture with traditional portraiture. He takes his aesthetic inspiration from Les Nabis, the early 20th-century Post-Impressionist group that included artists such as Pierre Gauguin and Pierre Bonnard, particularly in his avant-garde color palette and intentionally flat spatial planes. #31-0150. \$228,500

Canvas: 36¹/₄"h x 25⁵/₈"w | Frame: 44¹/₂"h x 33³/₄"w





FERDINANDO VICHI

1875-1945 | Italian

Inspiration

Circa 1890 | Marble and bronze

Signed (on base)

Five varieties of rare marble including Carrara, giallo antico, rosso antico, alabastro di Napoli and portoro combine to create this exceptional allegorical sculpture depicting a contemplative young woman seated on her cast bronze chair. One of the most talented Tuscan sculptors associated with the Galleria Bazzanti in Florence, Ferdinando Vichi is known for his incomparable work in marble. Adopting a neoclassical style, Vichi was acclaimed for his sculptures inspired by antiquity, and he was a master at capturing the female form in stone. #31-2481. \$168,500

Sculpture: 22 $\frac{1}{2}$ "w x 15 $\frac{1}{2}$ "d x 35 $\frac{1}{2}$ "h

With base: 70 $\frac{1}{2}$ "h







Chippendale Chest on Chest

Crafted of the highest-quality Cuban mahogany, this chest boasts the symmetry, elegant lines and precise construction that are hallmarks of the very best 18th-century English furnishings. Fitted with its original hardware, it also features the distinctive "red wash" underneath that was a Thomas Chippendale signature.

Circa 1770. #31-1704. \$78,850

41³/₄"w x 20¹/₂"d x 81³/₄"h



George III Concertina Card Table

Constructed for multi-functional use, this mahogany table contains an ingenious opening mechanism that allows one to open and extend the playing surface.

Circa 1810. #29-0865. \$24,500

35" w x 17" d x 29" h | 34" d (when open)





*Pietra Paesina Specimen Table
attributed to Gillows*

An extraordinarily rare specimen of Pietra Paesina, or "ruin" marble, is set in this Regency rosewood table. The designs in the stone, although natural, are almost painterly in appearance, creating a panoramic "view" that mimics the silhouettes of ancient ruins. Unlike other stones that are quarried, Pietra Paesina is only found in the river beds of Florence, making an example of this size and beauty an exceptional treasure. Circa 1820. #30-8715. \$198,500

36"dia. x 29"h



English Partner's Desk

This Victorian partner's desk, complete with its tooled leather writing surface and brass hardware, is designed for dual use, with drawers on one side and cabinets on the other. With curved sides that lend an elegance to the shape, this desk transforms the act of doing business into an art form. Circa 1890. #28-4212. \$48,850

60"w x 40"d x 30"h



19TH-CENTURY
ENGLAND

The economic, scientific, social and artistic transformations of the 19th century gave birth to a rich culture and powerful nation, and the British elite conveyed their wealth and status with luxurious furnishings.



Louis XV-Period Gilt Mirror

This gilt mirror is a tour de force of the Rococo age with its frame of scrolls, shells and acanthus leaves. Antique mirrors are highly coveted, and the present example is particularly rare as few mirrors dating to the mid-18th century survive.

Circa 1750. #30-7992. \$29,850

44³/₈"h x 31¹/₈"w x 4¹/₈"d



French Mirrored Plateau

This grand 19th-century plateau showcases superb ormolu bronze work surrounding a mirrored surface for displaying treasured objects at the center of a table. #30-9862. \$34,500

29½" dia. x 6½"h



i



*Wedgwood-Mounted Frame with
Royal Photograph*

When opened, this Wedgwood-mounted frame reveals a photograph of Queen Victoria and her daughter Princess Beatrice. Created by Sarony and Co. during the infancy of photography, this gilt brass frame represents a rare application of one of the most iconic styles of Wedgwood pottery. Circa 1880. #31-2870. \$8,850

8¹/₂"w x 8¹/₂"d x 10¹/₄"h



Wedgwood Tri-Color Jasperware Teapot

This teapot represents a rarity among Wedgwood creations. Tri-color jasper pieces are highly coveted, and white-bodied jasper pieces featuring colored decorations are particularly unique and prized. Circa 1850. #31-2863. \$4,950

6 1/2" w x 3 3/4" d x 3 7/8" h



Wedgwood Crimson Biscuit Barrel

This crimson jasperware container bears the firm's signature neoclassical decoration and a lid topped by an acorn handle. Wedgwood produced crimson jasper pieces for only a short period during the 1920s, making them extremely rare and highly collectible. Circa 1925. #31-2861. \$8,800

5 3/4" dia. x 7 3/4" h



Intaglio Glass Perfume

Crafted by English glassmakers Stevens & Williams, this perfume features a scroll and foliate design cut from green to cranberry glass that is completed by a silver collar and stopper. Circa 1900. #31-2741. \$4,950

3" dia. x 7½"h



Cut Glass Humidor

This humididor by Stevens & Williams is crafted from deep emerald green glass cut to clear and topped by a sterling silver lid by Theodore B. Starr. Hallmarked 1888. #31-2745. \$6,850

5" dia. x 7"h

BRILLIANT PERIOD
1876-1917

The 1876 Centennial Exposition in Philadelphia marked the beginning of a new era in decorative arts history, catapulting American cut glass makers onto an international stage.



Jewel Pattern Punch Bowl by Meriden

This two-piece punch bowl and ladle set is cut in one of the rarest and most desirable designs of the American Brilliant Period – the *Jewel* pattern. Circa 1900. #31-2750. \$16,850

14" dia. x 13½" h

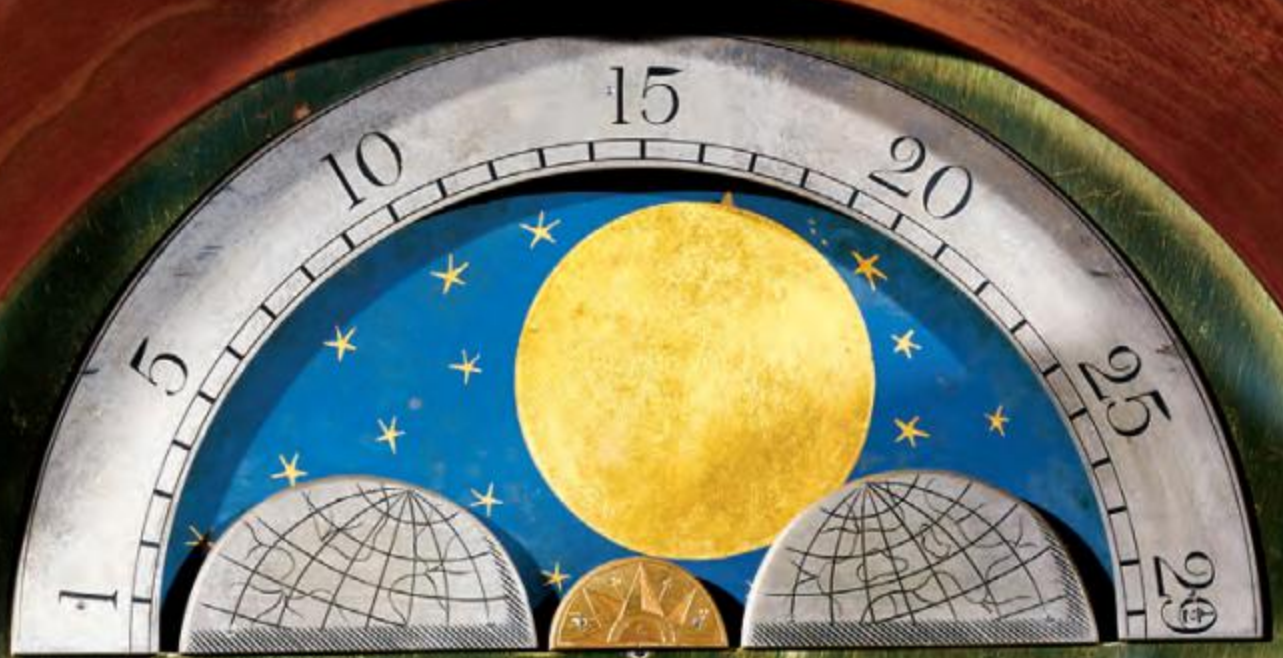
French Iron Floor Safe

A marvel of mechanical complexity, this fully functioning hobnail safe by Magaud de Charf of Marseilles is fitted with a highly complex locking mechanism complete with hidden keyholes and three unique keys. The secure structure is covered with thick iron plates and "hobnail" rivets as well as decorative iron mounts. Circa 1830. #31-1927. \$98,500

33½" w x 23¾" d x 48½" h









Mahogany Tall Case Clock

A complex eight-day movement powers this clock, which features nine tubular bells inside that chime the tunes of Westminster and Whittington. Designed to impress, the exhibition timepiece was likely crafted for one of the international exhibitions or to display in the window of a great clockmaker. Circa 1890. #31-1222. \$88,500

27¹/₄"w x 18"d x 115¹/₂"h

VICTORIAN
1837-1900

Referring to the period of Queen Victoria's reign, Victorian-era designs are known for their reinterpretation of historic styles.





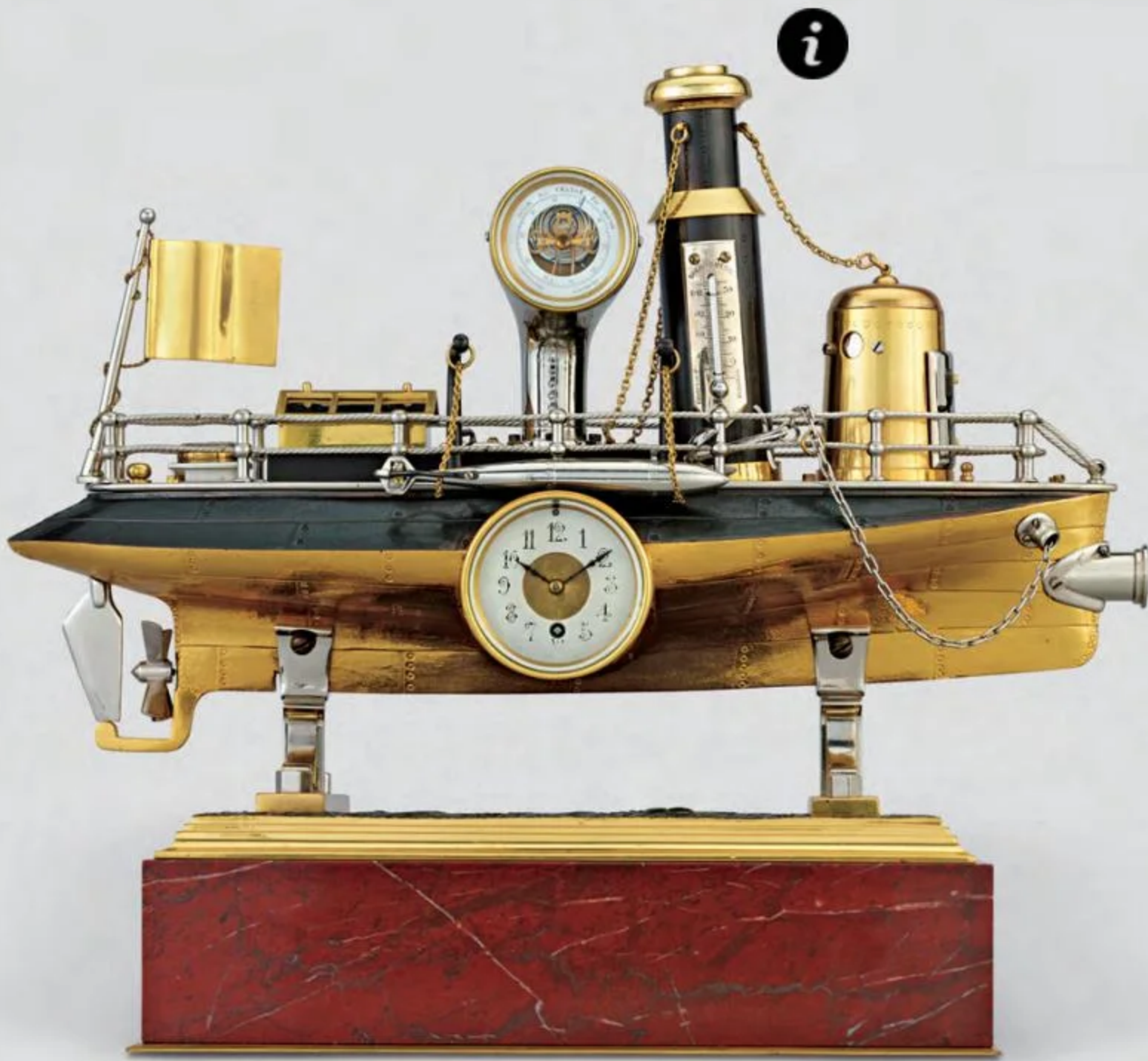
French Musical Automaton Picture Clock

This work of art blends the beauty of a painting with the mechanical complexities of a clock, a cylinder music box and an automaton. Attributed to Xavier Tharin of Paris, this painting quite literally comes alive when activated, from the group of farriers toiling away at the forge and anvil to the wagging of the charming terrier's tail. Circa 1880. #30-9019. \$88,500

44"w x 10¹/₄"d x 48¹/₂"h





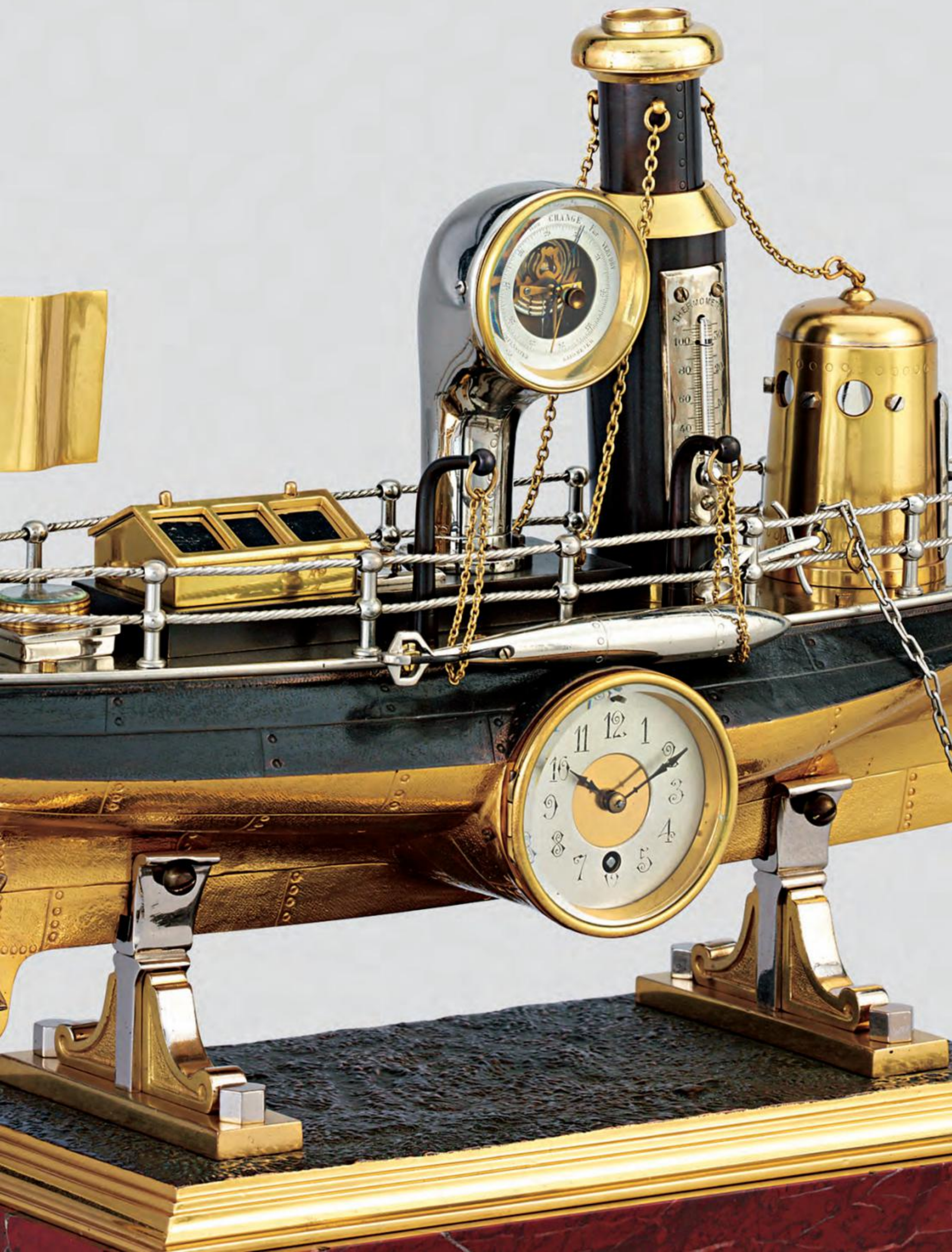


French Industrial Battleship Clock

Taking the form of a battleship, this automaton clock would have been made especially for a captain of industry. Not only does it incorporate a clock, thermometer and barometer, it also includes a mechanism that causes the propeller and turret both to spin. These rare timepieces usually depicted ships, submarines or trains, reflecting the new technologies and expanding world economy of the 19th century. Circa 1895. #31-1280. \$124,500

6¹/₄"w x 12¹/₂"d x 15"h







500 YEARS OF RARE TREASURES

Van Cleef & Arpels Squirrel Bracelet
A highly original 18K yellow gold bracelet
from the famed Parisian jewelry firm.
7" cir. #31-2591. \$98,500



BUY WITH CONFIDENCE

Expertise.

Everything in our gallery has been thoroughly researched and expertly vetted for quality and authenticity.

On Approval.

Many pieces can be sent to you on approval so you can view the piece in your home to ensure it is the perfect fit.

125% Guarantee.

Each piece we sell is backed by our 125% Guarantee, which offers 5% interest annually for up to five years.